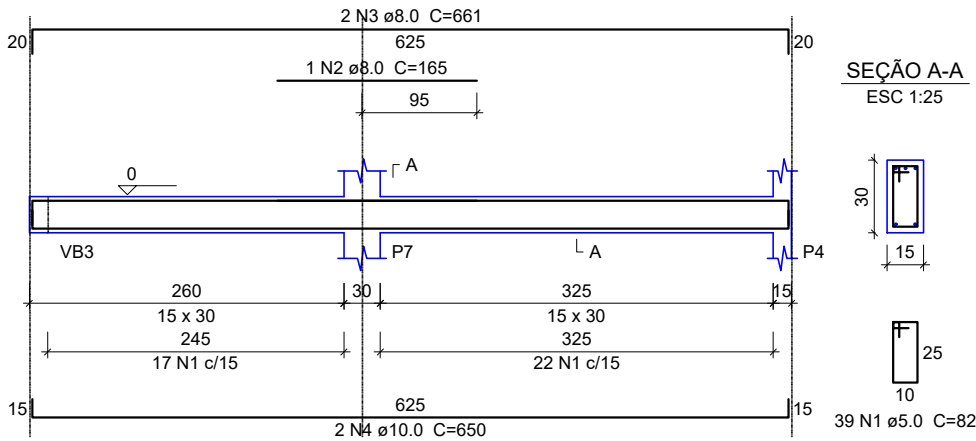


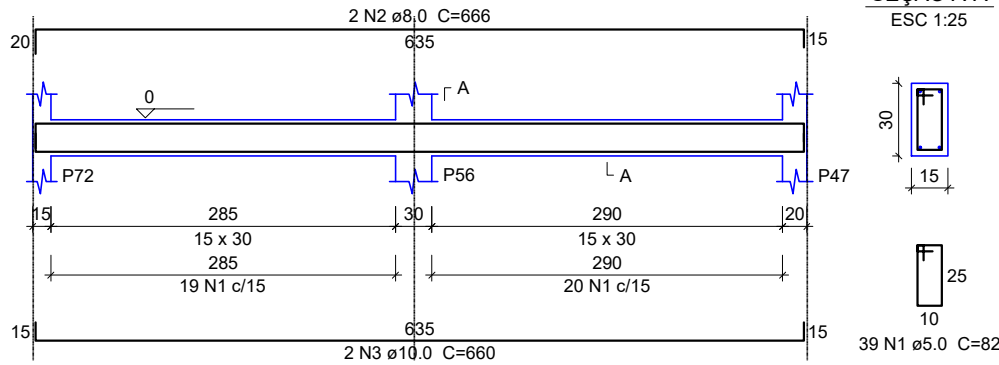
VB31

ESC 1:50



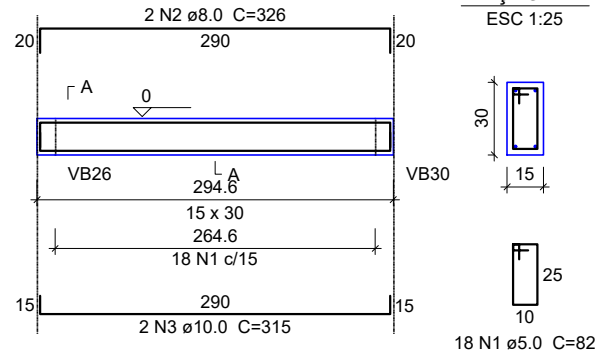
VB32

ESC 1:50



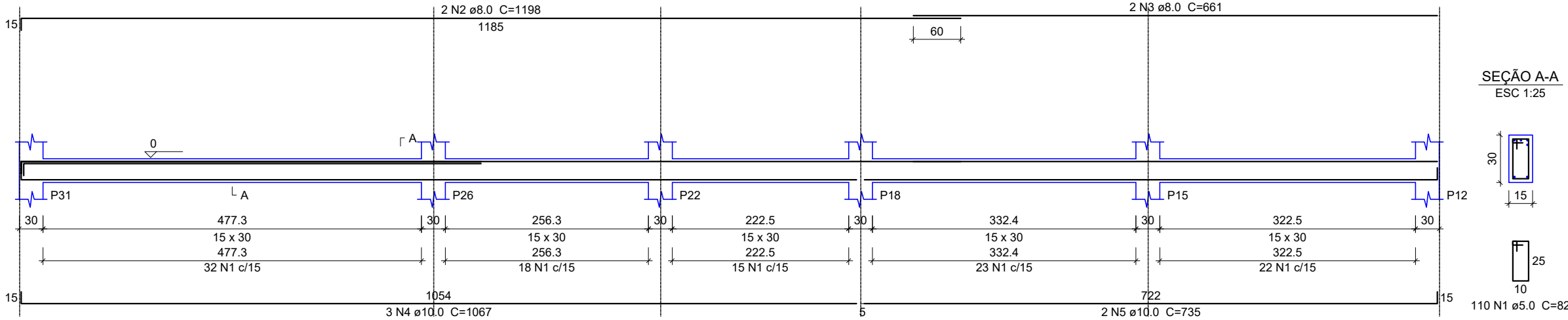
VB34

ESC 1:50



VB33

ESC 1:50



Relação do aço viga baldrame

ELEMENTO	AÇO	N	DIAM	Q	UNIT (cm)	C.TOTAL (cm)
VB1	CA60	1	5.0	75	82	6150
	CA50	2	8.0	2	1123	2246
	CA50	3	8.0	2	194	388
	CA50	4	10.0	2	828	1656
	CA50	5	10.0	2	418	836
VB2	CA60	1	5.0	50	82	4100
	CA50	2	8.0	2	846	1692
	CA50	3	10.0	2	858	1716
	CA50	1	5.0	36	82	2952
	CA50	2	8.0	2	600	1200
VB3	CA60	1	5.0	36	82	2952
	CA50	2	8.0	2	600	1200
	CA50	3	10.0	2	607	1214
	CA60	1	5.0	26	82	2132
	CA50	2	8.0	3	464	1392
VB4	CA60	1	5.0	26	82	2132
	CA50	2	8.0	3	464	1392
	CA50	3	10.0	2	440	880
	CA60	1	5.0	32	82	2624
	CA50	2	8.0	2	553	1106
VB5	CA60	1	5.0	32	82	2624
	CA50	2	8.0	2	553	1106
	CA50	3	10.0	2	560	1120
	CA60	1	5.0	33	82	2706
	CA50	2	8.0	2	571	1142
VB6	CA60	1	5.0	33	82	2706
	CA50	2	8.0	2	571	1142
	CA50	3	10.0	2	560	1120
	CA60	1	5.0	32	82	2624
	CA50	2	8.0	2	571	1142
VB7	CA60	1	5.0	32	82	2624
	CA50	2	8.0	2	571	1142
	CA50	3	10.0	2	560	1120
	CA60	1	5.0	311	82	25502
	CA50	2	8.0	7	210	1470
VB8	CA60	1	5.0	311	82	25502
	CA50	2	8.0	7	210	1470
	CA50	3	8.0	2	1198	2396
	CA50	4	8.0	2	1200	2400
	CA50	5	8.0	2	1072	2144
VB9	CA60	1	5.0	311	82	25502
	CA50	2	8.0	7	210	1470
	CA50	3	8.0	2	1198	2396
	CA50	4	8.0	2	1200	2400
	CA50	5	8.0	2	1072	2144
VB10	CA60	1	5.0	311	82	25502
	CA50	2	8.0	7	210	1470
	CA50	3	8.0	2	1198	2396
	CA50	4	8.0	2	1200	2400
	CA50	5	8.0	2	1072	2144
VB11	CA60	1	5.0	311	82	25502
	CA50	2	8.0	7	210	1470
	CA50	3	8.0	2	1198	2396
	CA50	4	8.0	2	1200	2400
	CA50	5	8.0	2	1072	2144
VB12	CA60	1	5.0	311	82	25502
	CA50	2	8.0	7	210	1470
	CA50	3	8.0	2	1198	2396
	CA50	4	8.0	2	1200	2400
	CA50	5	8.0	2	1072	2144
VB13	CA60	1	5.0	311	82	25502
	CA50	2	8.0	7	210	1470
	CA50	3	8.0	2	1198	2396
	CA50	4	8.0	2	1200	2400
	CA50	5	8.0	2	1072	2144
VB14	CA60	1	5.0	311	82	25502
	CA50	2	8.0	7	210	1470
	CA50	3	8.0	2	1198	2396
	CA50	4	8.0	2	1200	2400
	CA50	5	8.0	2	1072	2144
VB15	CA60	1	5.0	311	82	25502
	CA50	2	8.0	7	210	1470
	CA50	3	8.0	2	1198	2396
	CA50	4	8.0	2	1200	2400
	CA50	5	8.0	2	1072	2144
VB16	CA60	1	5.0	311	82	25502
	CA50	2	8.0	7	210	1470
	CA50	3	8.0	2	1198	2396
	CA50	4	8.0	2	1200	2400
	CA50	5	8.0	2	1072	2144
VB17	CA60	1	5.0	311	82	25502
	CA50	2	8.0	7	210	1470
	CA50	3	8.0	2	1198	2396
	CA50	4	8.0	2	1200	2400
	CA50	5	8.0	2	1072	2144
VB18	CA60	1	5.0	311	82	25502
	CA50	2	8.0	7	210	1470
	CA50	3	8.0	2	1198	2396
	CA50	4	8.0	2	1200	2400
	CA50	5	8.0	2	1072	2144
VB19	CA60	1	5.0	311	82	25502
	CA50	2	8.0	7	210	1470
	CA50	3	8.0	2	1198	2396
	CA50	4	8.0	2	1200	2400
	CA50	5	8.0	2	1072	2144
VB20	CA60	1	5.0	311	82	25502
	CA50	2	8.0	7	210	1470
	CA50	3	8.0	2	1198	2396
	CA50	4	8.0	2	1200	2400
	CA50	5	8.0	2	1072	2144
VB21	CA60	1	5.0	311	82	25502
	CA50	2	8.0	7	210	1470
	CA50	3	8.0	2	1198	2396
	CA50	4	8.0	2	1200	2400
	CA50	5	8.0	2	1072	2144
VB22	CA60	1	5.0	311	82	25502
	CA50	2	8.0	7	210	1470
	CA50	3	8.0	2	1198	2396
	CA50	4	8.0	2	1200	2400
	CA50	5	8.0	2	1072	2144
VB23	CA60	1	5.0	311	82	25502
	CA50	2	8.0	7	210	1470
	CA50	3	8.0	2	1198	2396
	CA50	4	8.0	2	1200	2400
	CA50	5	8.0	2	1072	2144
VB24	CA60	1	5.0	311	82	25502
	CA50	2	8.0	7	210	1470
	CA50	3	8.0	2	1198	2396
	CA50	4	8.0	2	1200	2400
	CA50	5	8.0	2	1072	2144
VB25	CA60	1	5.0	311	82	25502
	CA50	2	8.0	7	210	1470
	CA50	3	8.0	2	1198	2396
	CA50	4	8.0	2	1200	2400
	CA50	5	8.0	2	1072	2144
VB26	CA60	1	5.0	311	82	25502
	CA50	2	8.0	7	210	1470
	CA50	3	8.0	2	1198	2396
	CA50	4	8.0	2	1200	2400
	CA50	5	8.0	2	1072	2144
VB27	CA60	1	5.0	311	82	25502
	CA50	2	8.0	7	210	1470
	CA50	3	8.0	2	1198	2396
	CA50	4	8.0	2	1200	2400
	CA50	5	8.0	2	1072	2144
VB28	CA60	1	5.0	311	82	25502
	CA50	2	8.0	7	210	1470
	CA50	3	8.0	2	1198	2396
	CA50	4	8.0	2	1200	2400
	CA50	5	8.0	2	1072	2144
VB29	CA60	1	5.0	311	82	25502
	CA50	2	8.0	7	210	1470
	CA50	3	8.0	2	1198	2396
	CA50	4	8.0	2	1200	2400
	CA50	5	8.0	2	1072	2144
VB30	CA60	1	5.0	311	82	25502
	CA50	2	8.0	7	210	1470
	CA50	3	8.0	2	1198	2396
	CA50	4	8.0	2	1200	2400
	CA50	5	8.0	2	1072	2144

ELEMENTO	AÇO	N	DIAM	Q	UNIT (cm)	C.TOTAL (cm)
VB31	CA60	1	5.0	39	82	3198
	CA50	2	8.0	2	666	1332
	CA50	3	8.0	2	660	1320
	CA50	4	10.0	2	805	1610
	CA50	5	10.0	2	828	1656
VB32	CA60	1	5.0	39	82	3198
	CA50	2	8.0	2	666	1332
	CA50	3	8.0	2	660	1320
	CA50	4	10.0	2	805	1610
	CA50	5	10.0	2	828	1656
VB33	CA60	1	5.0	39	82	3198
	CA50	2	8.0	2	666	1332
	CA50	3	8.0	2	660	1320
	CA50	4	10.0	2	805	1610
	CA50	5	10.0	2	828	1656
VB34	CA60	1	5.0	39	82	3198
	CA50	2	8.0	2	666	1332
	CA50	3	8.0	2	660	1320
	CA50	4	10.0	2	805	1610
	CA50	5	10.0	2	828	1656

Resumo do aço total de viga baldrame

AÇO	DIAM	C.TOTAL (m)	PESO (kg)
CA50	8.0	661.1	260.8
CA60	10.0	628.8	387.7
CA60	5.0	1657.3	255.5
PESO TOTAL			
CA50	648.5		
CA60	253.2		

Vol. de concreto total (C-25) = 13.75 m³
Área de forma total = 221.58 m²

VIGA BALDRAME

ESC: 1/125



PREFEITURA MUNICIPAL DE VÁRZEA GRANDE
Av. Castelo Branco, Espaço Municipal, 2500 - Centro Sul, Várzea Grande/MT
CEP 78125-700 - Fone/Fax: